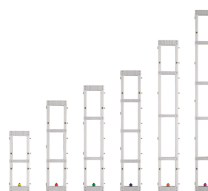
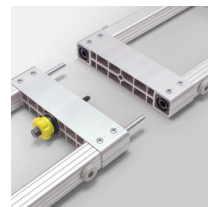


FIXED SCREEN STAGESCREEN®

STRONG, MODULAR FRAME



Location: North American Auto Show
Dealer and installer: TVS Communication Solutions

All available sizes of the free-standing or flown StageScreen utilize a combination of the same frame sections. Interchangeable parts make it easy to reuse frame pieces to create different size viewing formats. While offering an optimal solution for streamlining inventory, sizing flexibility also enables a greater return on initial investment for the AV rental market. An 8" truss design makes StageScreen significantly stronger than traditional truss folding screens. The Draper® unique DuraLoop™ bungee system features quick, easy attachment of the viewing surface. Self-centering tension offers a truly flat viewing surface for better image quality making StageScreen ideal for stage, theaters, or large venues.

Portable folding screens are engineered for easy assembly and to withstand the rigors of long term use. Screens remain taut and flat when attached. **Includes** carrying case.

DRESS KIT AVAILABLE
CARRYING CASE AVAILABLE
STAGESCREEN LEGS AVAILABLE

FEATURES

- May be wall-mounted, suspended, or free-standing.
- Frame available in a black finish. Optional anodized silver finish available upon request.
- No hinges, snaps, or cranks required. Color-coded frame and instructions ensure fast and easy assembly.
- Frame sections are connected with permanently attached threaded links and guide pins.
- Viewing surface attaches easily to perimeter frame with DuraLoop™ bungee cord loops.
- The image area of each screen is exact and true to format.
- Includes wheeled heavy-duty polyethylene carrying case.

WARRANTY

draperinc.com/warranty.aspx

US PATENTS

draperinc.com/legal/patents/

OPTIONS

- Frame available in silver anodized or black finish.
- Legs, anti-sway stabilizer bars and stiffener bars for larger configurations.
- **Viewing Surfaces:** TecVision®, OptiFlex™ (tensioned) and CineFlex™ (rear projection) families.

SUPPORTING DOCUMENTS

All instructions, technical drawings and other supporting documents are located at: draperinc.com/documents.aspx

SIZES

- Maximum image area width 75' (22.86 m).
- Maximum image area height 22'6" (6.9 m).
- 16:9 HDTV FORMAT: from 110" (2.7 m) to 551" (14 m) diagonal.
- MULTI FORMAT: from 501" (12.73 m) to 752" (19.1 m) diagonal.
- Custom sizes available.
- StageScreen Configuration Tool

For more information on this product visit:
draperinc.com/projectionscreens/fixedscreens.aspx

