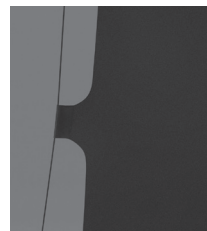


ELECTRIC Paragon V

TAB-TENSIONED, CEILING- OR WALL-MOUNTED



■ Paragon V electric projection screen the largest tab-tensioned screen Draper® offers. Its size makes it ideal for auditoriums or lecture halls. Tab-tensioned screens provide a perfectly flat viewing surface with better image quality. RF welded tabs create a more durable seal that eliminates separation and stickiness. This heavy-duty screen provides smooth, quiet, and reliable operation.

THIS SCREEN IS TAB-TENSIONED
RF welded tabs eliminate stickiness and tab separation. Tabs warranted against separation for five years. Tab-tensioned screens provide a perfectly flat viewing surface with better image quality.

FEATURES

- Image area fully framed with black. Standard 12" (30 cm) black drop at top of viewing area.
- Includes extruded aluminum case with white finish.
- Bottom closure panel provides easy access for service or maintenance.
- Rear projection surfaces available.
- Includes a 110V, 3-position switch (standard).



OPTIONS

- **Viewing Surfaces:** TecVision®, OptiFlex™ (tensioned), CineFlex™ (rear projection), and ClearSound families.
- Optional wall-mounting brackets and ceiling trim flange kit.
- Low-voltage modules and controls or 220V options are available.

WARRANTY

draperinc.com/warranty.aspx

SUPPORTING DOCUMENTS

All instructions, technical drawings and other supporting documents are located at: draperinc.com/documents.aspx

SIZES

- **Case dimensions** 13 ¼" high x 12" deep (34 cm x 30 cm). Optional extra drop may increase case length.
- **Maximum image width** up to 24' (732 cm) wide, depending on surface.
- 16:10 FORMAT: 234" to 335" (850 to 594 cm) diagonal.
- 16:9 HDTV FORMAT: 227" to 324" (576 to 822 cm) diagonal.
- 4:3 NTSC/PAL FORMAT: 250" to 30' (635 to 914 cm) diagonal.
- AV FORMAT: from 13' 6" x 18' (411 cm x 549 cm) to 18' x 24' (549 cm x 732 cm) viewing area.
- Custom sizes available.

For more information on this product visit:

draperinc.com/projectionscreens/electricscreens.aspx

