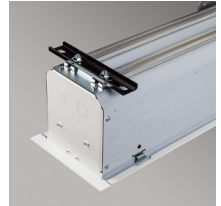


MANUAL ACCESS M

CEILING-RECESSED, FREE-HANGING



■ The ceiling-recessed Access M manually-operated spring roller projection screen is ideal for boardrooms, classrooms or mid-sized training rooms. Free-hanging, fiberglass-backed projection screens maintain flatness thanks to the weight of the screen and bottom dowel. The bottom closure panel provides access to all components for easier service and maintenance. Installation of the case during the initial phase of construction eliminates job site damage, allowing for installation of the screen at a later time.

Spring-roller operated screens for simplicity of operation and no wiring set-up or cost. Free-hanging, fiberglass-backed projection screens maintain flatness thanks to the weight of the screen and bottom dowel.

FEATURES

- NTSC, HDTV AND 16:10 format have image area framed with black on all four sides. Black side borders are available on request for AV format screens.
- Spring-roller operated front projection screen provides a quiet, smooth operation.
- Adjustable or removable hoisting brackets included for easy lifting during installation.
- Sliding brackets inside case accommodate different size screens.
- Bottom closure panel can hang in place when open or is detachable.
- Sizes above 70" (178 cm) in height include pull cord.
- White case standard, black available.

OPTIONS

- Optional, removable aluminum operating pole available in lengths of 4' or 6' (122 cm or 183 cm).
- **Viewing Surfaces:** OptiView™ (self-supporting) family.

WARRANTY

draperinc.com/warranty.aspx

SUPPORTING DOCUMENTS

All instructions, technical drawings and other supporting documents are located at: draperinc.com/documents.aspx

SIZES

- Case dimensions 8 1/16" deep x 7 3/8" high (20 cm x 19 cm) including trim flange and mounting brackets.
- Maximum image width up to 12' (366 cm) wide, depending on surface selection.
- 16:10 FORMAT: 165" (419 cm) diagonal.
- 16:9 HDTV FORMAT: 161" (409 cm) diagonal.
- 4:3 NTSC/PAL FORMAT: 15' (457 cm) diagonal.
- AV FORMAT: from 108" x 144" (274 cm x 366 cm) to 144" x 144" (366 cm x 366 cm) viewing area.
- Custom sizes available.

For more information on this product visit:
draperinc.com/projectionscreens/manualscreens.aspx

